

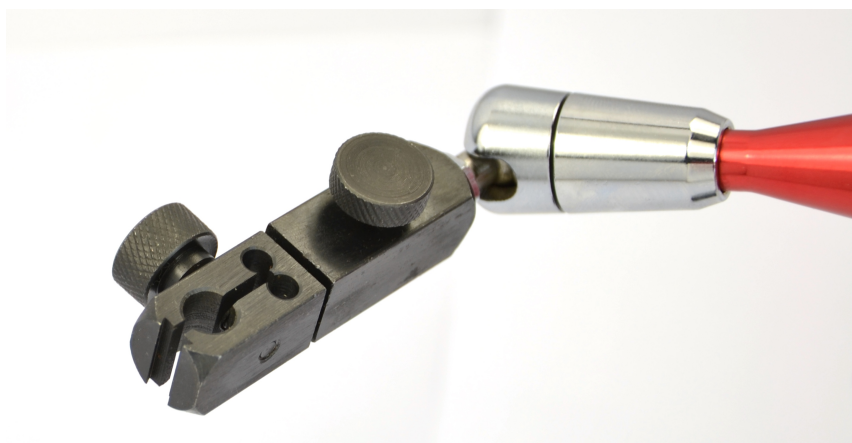
**Product name : Magnetic stand SM-250PR**

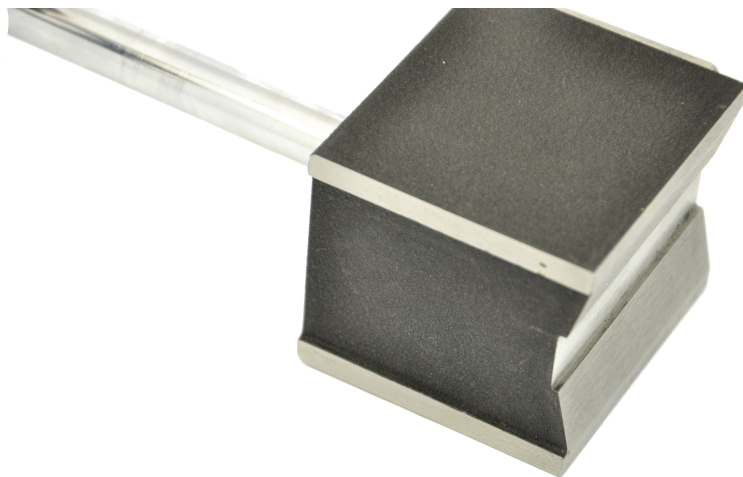
## PERFORMANCE PARAMETERS

Length	73 [mm]
Width	50 [mm]
Height	55 [mm]
Thread type	wewnętrzny, M8
Magnet type	Neodymium
Maximal hoisting capacity	100 [kg]
Maximum working temperature	≤ 80 °[C]
With separable magnetic field	yes
Magnetic field switcher	yes, one for all planes
Range	150 + 170 mm [mm]
Weight	2 [kg]

Magnetic tripod for dial indicators. Equipped with an articulated arm and a precision gauge at the sensor holder. Magnetic base with magnetic field switch with dimensions (L x W x H): 73 x 50 x 55 mm, has two mounting options: the bottom surface is suitable for mounting on flat and round components, while the side surface is suitable for mounting to flat components. The tripod uses a 5-axis adjustable flexible arm, lockable with a single knob in any position, making it much easier and quicker to position the tripod correctly. The tripod has one knob for locking.

Magnetic base pulling force: max. 980 N (\*).





(\* - the load capacity of a tripod depends on several factors: thickness and roughness of the sheet metal (max. load capacity for sheet metal over 10 mm), type of material (e.g. steel, cast iron) and non-magnetic gap (thickness of paint coating, dirt, etc.).

---