



Product name : One-level magnetic grate for funnel phi 130 / N

PERFORMANCE PARAMETERS

Manufacturer	Enes Magnesy
External diameter	130 [mm]
magnetic drums diameter	18 [mm]
Height	32 [mm]
Magnet type	Neodymium
Maximum magnetic field over the middle poles	0,54 [T], 5400 [Gs] +/- 5%
Flow surface	57,9
Number of magnetic bars	3
polarity	circumferential poles
Maximum working temperature	≤ 80 °[C]
Housing	stainless steel, AISI 304 / EN 1.4301, approved for contact with food
one-level	yes
Przesypowy	yes
for installation in the pipeline	yes
for installation in the duct	yes
Zasypowy	yes
work in systems with the flow of purified material	grawitacyjnym, wymuszonym
Weight	500 [g]

Separation magnetic grates are used for catching magnetically soft elements (iron filings, bolts, etc.) from loose materials (powders, granulated products, grains). They may be of use in food industry (as a version closed in acid-proof steel OH18N9(1.4301)(304) und 1H18N9T(1.4541)(321) housing), as well as in plastics processing, ceramic and many other branches of industry.

Magnetic grate made of acid-proof steel contains a magnetic system assembled with neodymium magnets. It is a surface of the three incorporated into the separator magnetic filter bars of 18 mm in diameter which is magnetically active.



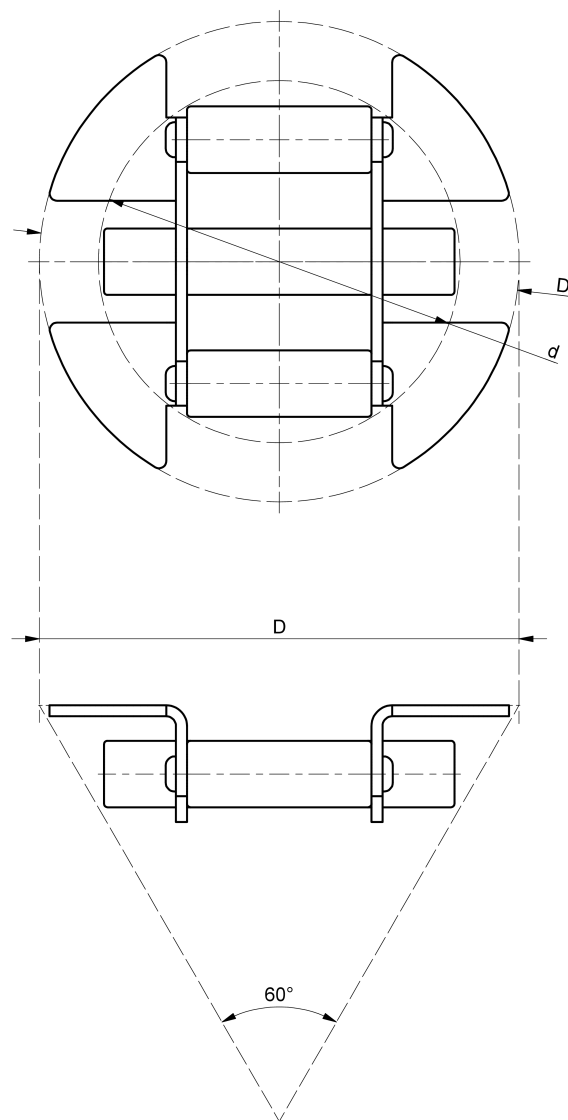
On commission we are ready to provide magnetic separators with dimensions chosen by Clients. Magnetic parameters, range of activity and dimensions are adjusted according to Client needs and expectations.

Magnetic field over midpoles on surface of protection tube of the magnetic filter bar is min. 0,480 [T].

In the magnetic grate sintered neodymium magnets were used. Max. working temperature for the magnetic grates with neodymium magnets is approx. **80°C**.

Caution! A careless handling can cause serious injury to hands !

Weight of grate is: ~0,45 [kg]



Type of
grate

External diameter

Diameter (on height of bar axis) d [mm]

D [mm]

fi 130/100

130

100

fi 160/125

160

125

fi 190/150

190

150

fi 240/200

240

200

fi 280/240

280

240

fi 340/290

340

290

fi 390/350

390

350